

---

# MASTER PLAN

## RENOVATION OF 1895 MARINE HOSPITAL, SITEWORK, FRESNEL LENS PAVILION, VEHICLE & VESSELS BUILDING, AND EXHIBIT GALLERIES



The Master Plan for the new Martha's Vineyard Museum will include complete renovation of the 1895 Marine Hospital and entirely new construction. In addition to restoring the 121-year-old historic structure, it will add a new pavilion for the 1854 First Order Fresnel Lens; a multisensory room for children; spacious exhibit galleries and collection storage that meet contemporary museum standards of light and climate control; and a Vehicles and Vessels gallery for such large objects as whaleboats and carriages.

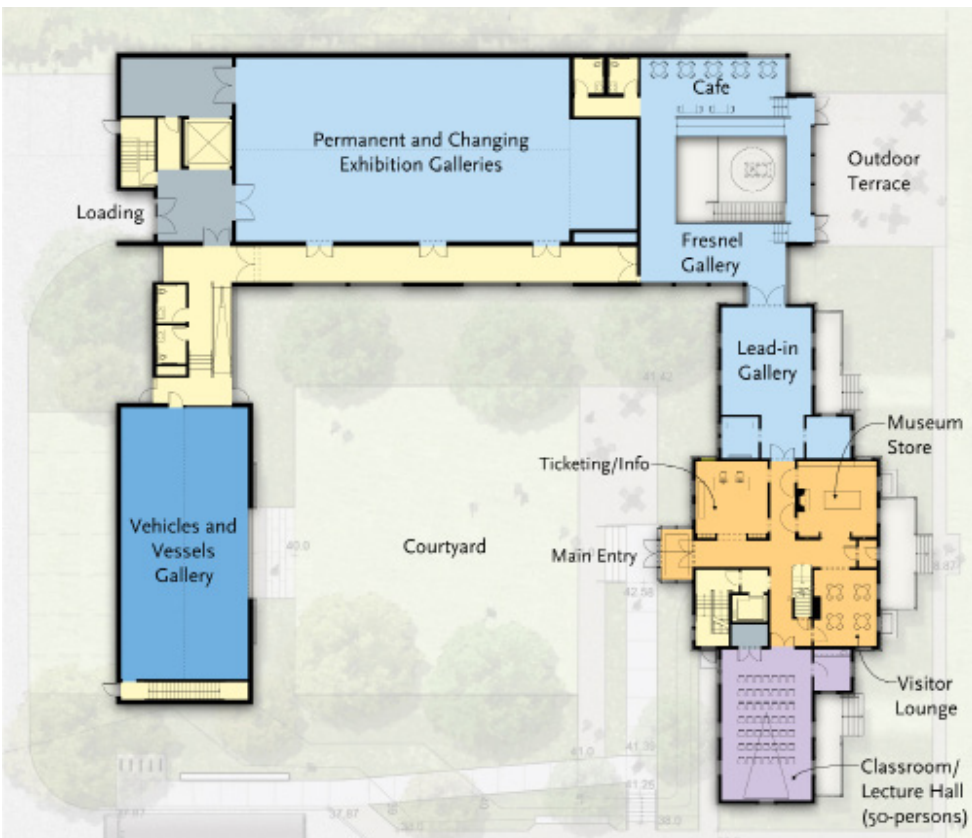
## Basement



## Key

- Lobby
- Exhibit
- Large Objects Gallery
- Collection Storage
- Library and Education
- Office
- Operations and Support
- Circulation and Other

## First Floor



## Second Floor

